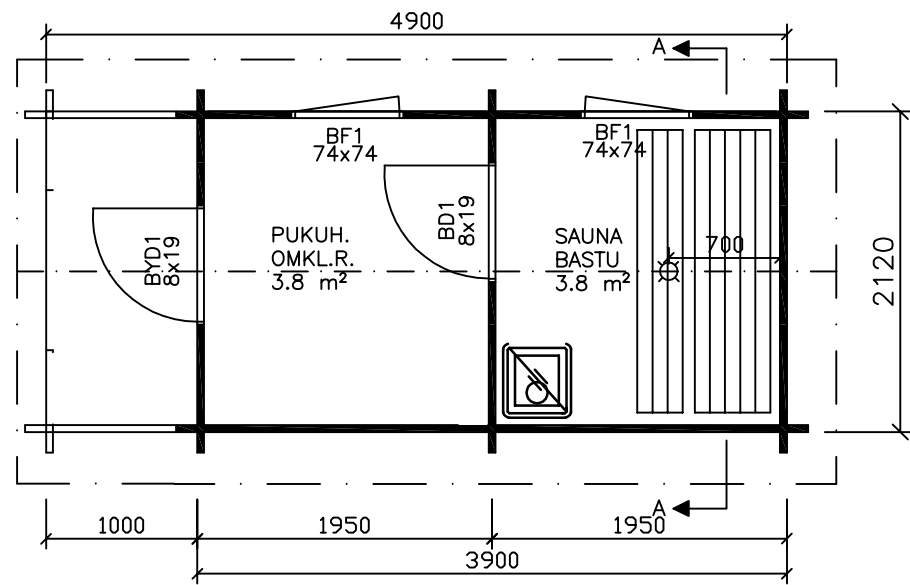
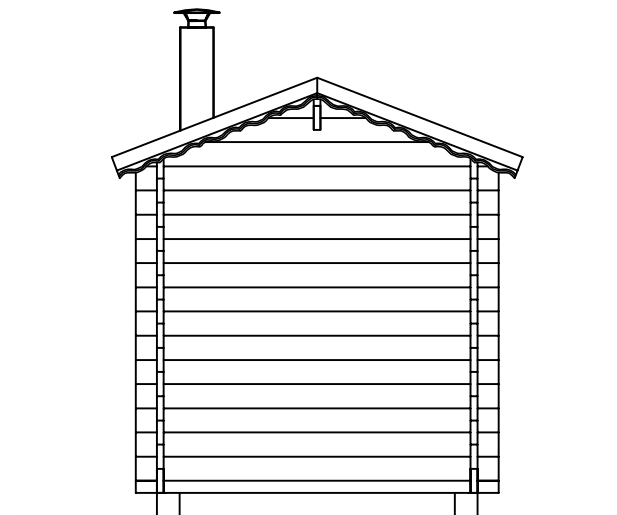
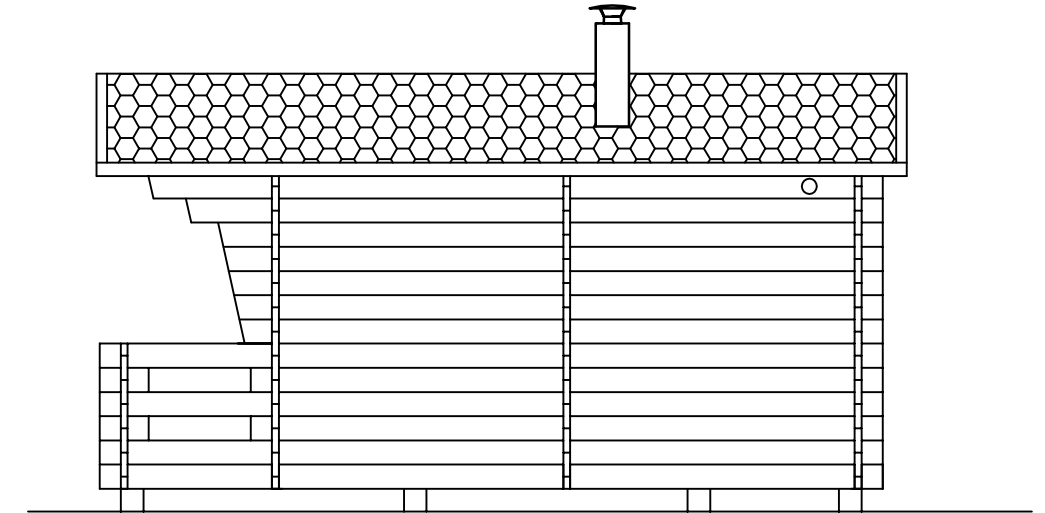
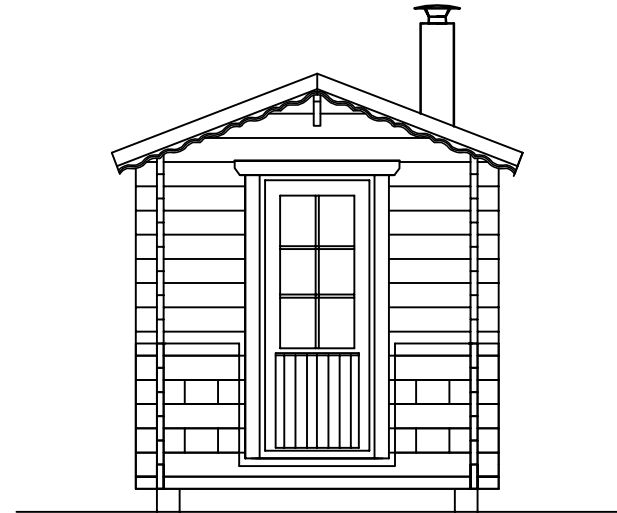
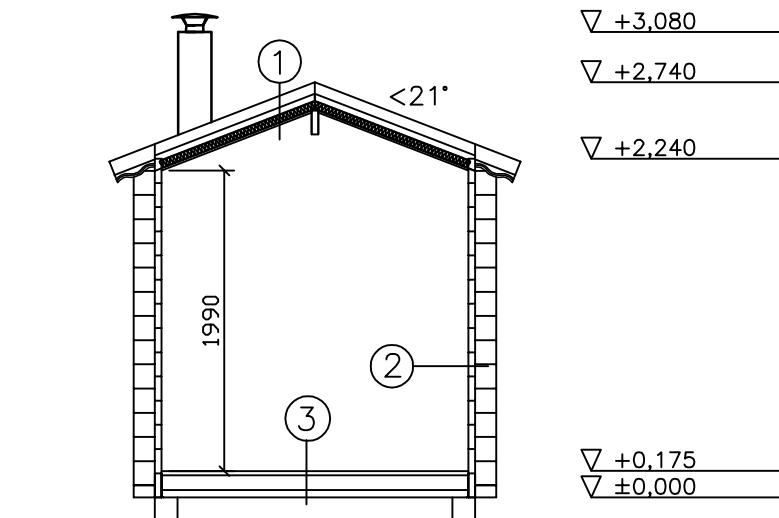


Visningbastu Alvar 11 45mm +1 stockvarv. isolerat om.kl.r 100mm tak och golv
 Näyttelysauna Alvar 11 45mm + 1 hirsikerta, eristetty pukuhuone 100mm katto ja lattia



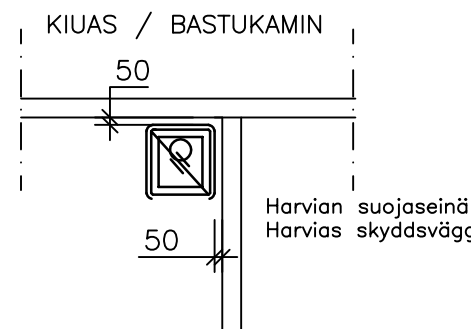
LEIKKAUS / SKÄRNING A - A



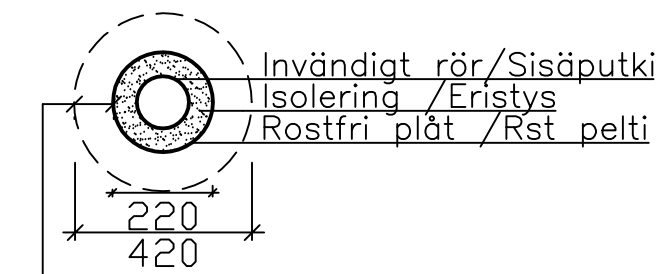
- ①
- Kattohuopa/Takfilt
 - Raakapontti/Råspont 20*120
 - Tuuletusrako/Luftspalt
 - Tuulisuoja/Vindskydd
 - Kattotuoli/Takstol 28*95
 - Eristys/Isolering 50mm
 - Alumiinipaperi/Aluminiumpapper
 - Paneeli/Panel 14*120

- ②
- Hirsi/Stock

- ③
- Lattialaudat/Golvbräder 28*95
 - Lattiavasat/Golvvasor 48*98



Teräspiippu/Stålskorsten
 EN 1856-1-T600-N1-D-VmL20070-G100



Skyddsavstånd min 100mm
 Suojaetäisyys min 100mm

Weekend House

HUONEISTOALA / LÄGENHETSUTA	7,6 m ²
KERROSALA / VÄNINGSYTA	8,3 m ²
TILAVUUS / VOLYM	18,0 m ³
RAKENNUSALA / BYGGNADSYTA	10,5 m ²