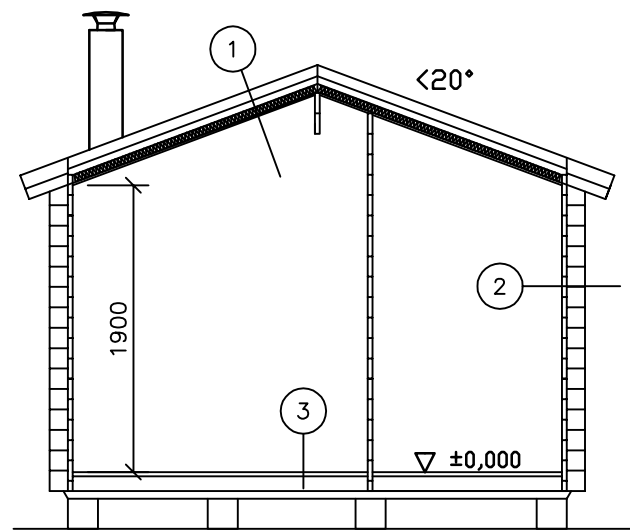
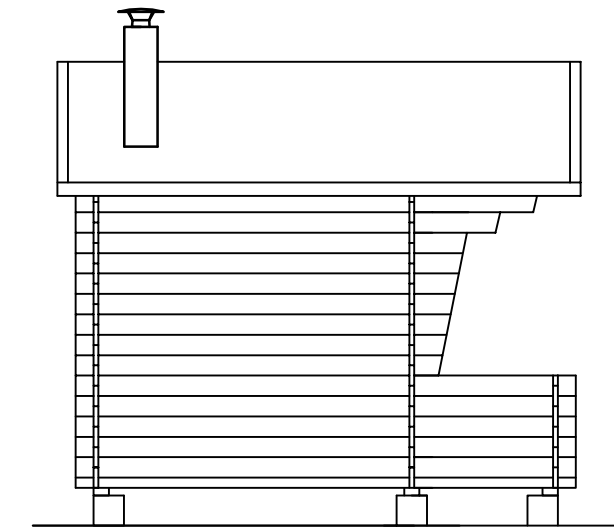
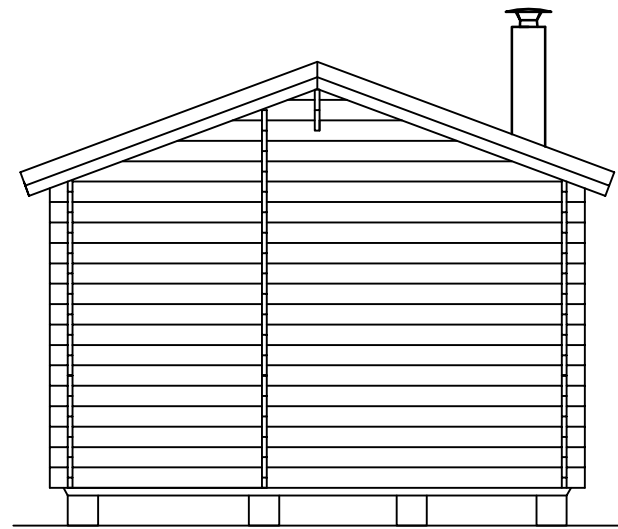
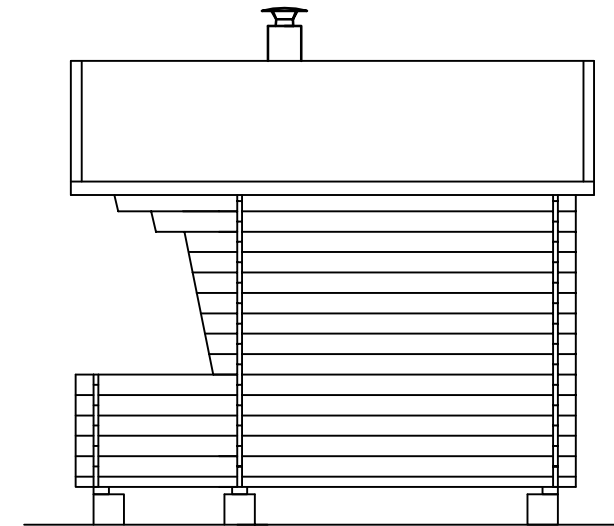


SKÄRNING A-A



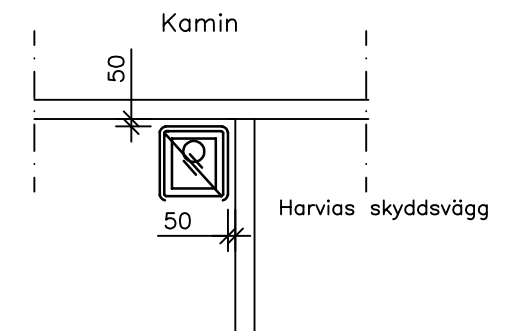
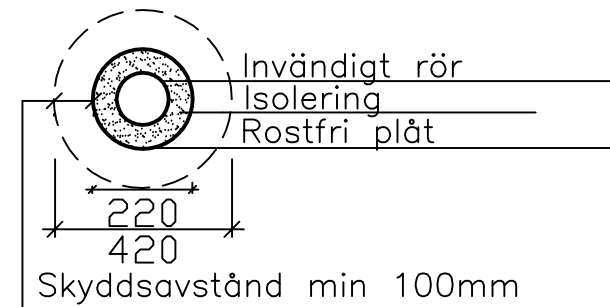
$\nabla +2,920$

$\nabla +2,690$

$\nabla +1,965$

$\nabla -0,126$

Stålskorsten
EN 1856-1-T600-N1-D-VmL20070-G100



- ①
- Takfilt
 - Råspont 20*120
 - Takstolar 48*98 c/c600
 - Luftspalt 45mm
 - Vindskydd
 - Isolering 50mm
 - Aluminiumpapper
 - Panel 14*120

- ②
- Stock 32*145
- ③
- Golvräder 28*95
 - Golvasor 48*98 c/c600

LÄGENHETSUTA	6,6 m ²
VÅNINGSYTA	7,0 m ²
VOLYM	22,0 m ³
BYGGNADSYTA	10,0 m ²